

Residential: Executive Condominium (17,000sqm)

Living concept focusing on environmental sustainability and self sufficiency within the lush green nature surroundings of Dairy Farm. A serene habitat for individuals and families with a heart for nature.

White Zone: Urban Agriculture Centre with Commercial and Hub Car Park (30,600sqm)

With the goal of strengthening food security in Singapore as well as accelerate the adoption of nature-protective mentality in Singaporeans. UAC offers both indoor and outdoor farming facilities for local agriculture organizations to have more exposure and engagement with locals, encouraging more appreciation and consumption of local produce. It is also a place that gives aspiring urban farmers or gardening beginners a chance in at urban agriculture and home gardening, via the UAC incubation programme and allotment garden. The commercial space strives to offer a brand new dining and retail experience that is linger-friendly with the shorter block distance and host a collective of local businesses that emphasize on sustainability.

Civic and Community Institution (11,000sqm)

Consists of an early childhood development centre and an elderly care centre. As the pioneer of its kind, the early childhood development centre will serve as a child-care and preschool for up to 1500 students, providing them ample safe space to run wild and be a child. The centre is also expected to allow children from all walks of life to interact and integrate with one another and with nature. The elderly care centre will serve as in a drop-in facilities centre and as a provider of specialised elderly care. It is designed to enable the elderly to enjoy the surrounding amenities and to improve their overall mental, physical and emotional well-being.



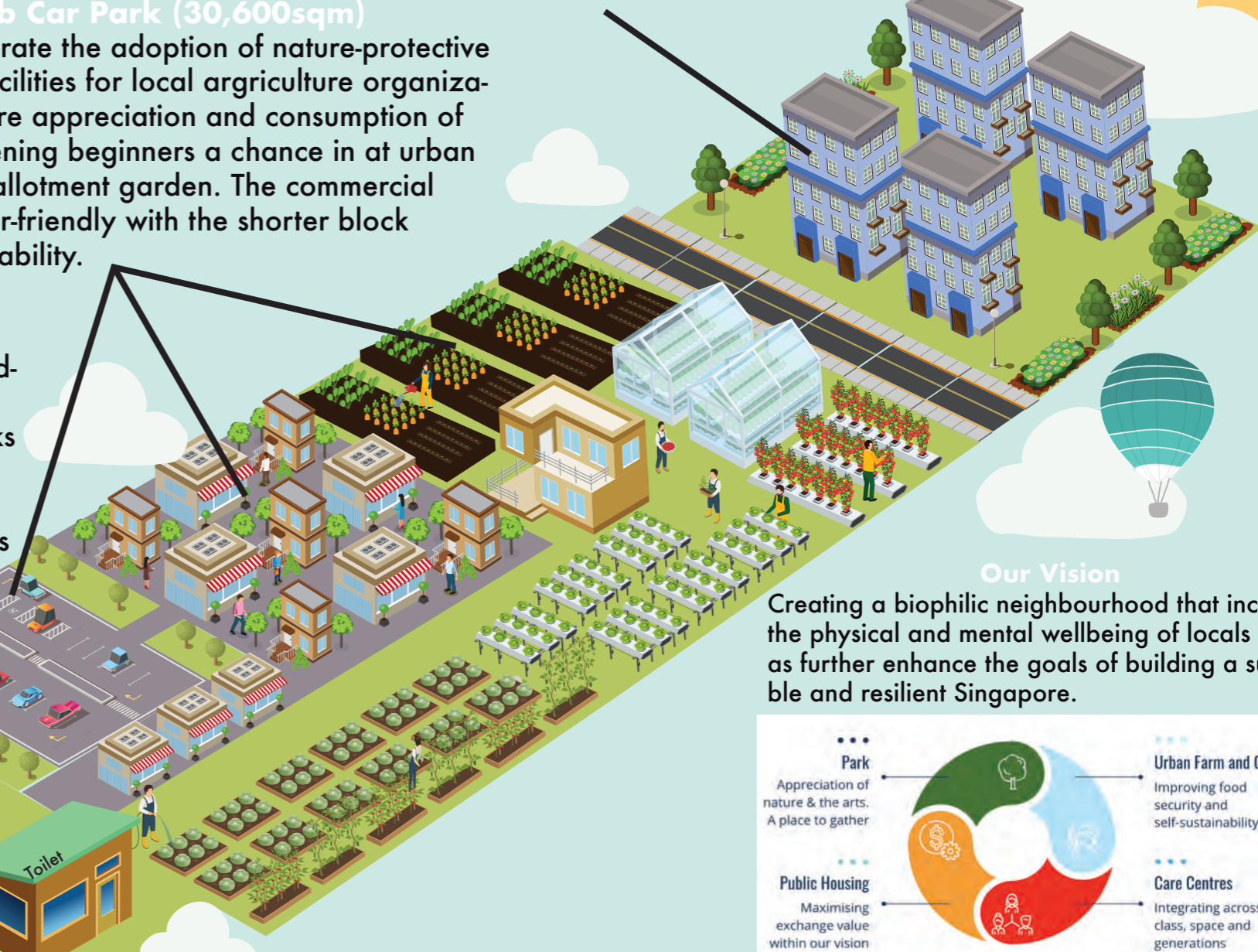
Increasing accessibility via strengthening public transport



Petir Road

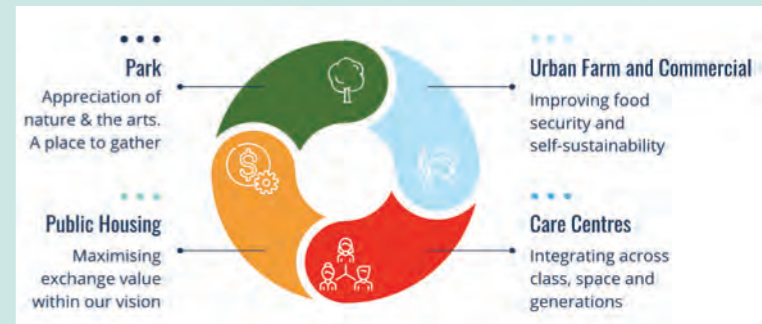
Dairy Farm Park (34,000sqm)

A park that holds on to the lesser known heritage of Dairy Farm, using motifs of what Bukit Timah used to be. Leveraging on the wide space, the park is open to pop-up events, performances, and dog walks. By implementing permanent, yet inexpensive infrastructure, the park becomes usable as visitors spend quality time in the area.



Our Vision

Creating a biophilic neighbourhood that increases the physical and mental wellbeing of locals as well as further enhance the goals of building a sustainable and resilient Singapore.



Our Phasing Timeline



Site Selection Rationale

Bukit Panjang is rich in natural heritage and has a high community support for preserving greenery as well as leisure gardening, thus increasing the chance of higher utilisation of Elysium. In addition, through common public spaces and activities, we hope to bridge the existing inequity issue among the zoning areas in Bukit Panjang.

ELYSIUM

The Dream Neighbourhood of Tomorrow