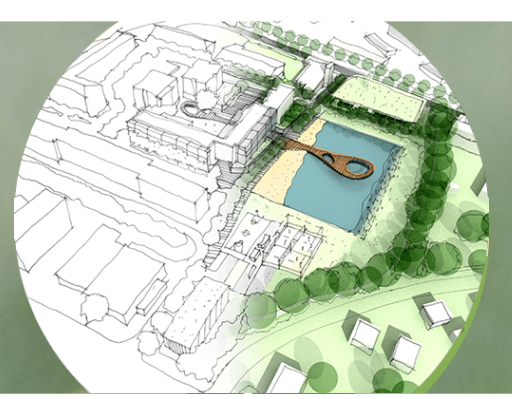


THE MILKY WAY PLAN

To create a mixed-use space for increasing residents and public goods



Residential

Increase residents & value of facilities

- Land lease: 99 years
- 15 Storeys, 389 residential units
- Nature Theme
- View of Bukit Timah Hill
- Amenities – swimming pool, gym, BBQ pit
- Shuttle bus service to Hillview MRT



Community Centre

Common space for all residence at Dairy Farm to promote social interaction

- Encourage social interactions & community bonding.
- Open Areas for gathering
- Child/ Senior Care Centre
- Library – Study Area
- F&B Outlets and Cafes



Cultural Hub

To promote a recreational inter-cultural exchange focusing on the arts and atmosphere for both locals and expats

- Language centers
- Painting room/cafe
- Karaoke
- SG film screening & play theatre
- Conceptual retail stores



The Gardens

To promote biodiversity conservation and increase greenspace.

- Circular Design
- Glow-in-the-dark theme
- Picnic spots
- Urban farming
- Recreational activities
- Social Interaction



Phase 1:
Consultation

Phase 2:
Make &
Exhibit
Plans

Phase 3:
Implementation

Phase 4:
Review