

Roots @DF

YOUR SANCTUARY. WITHIN A CITY.

We seek to promote mindfulness amidst a busy lifestyle, to breathe new life into the community by building a common space for residents while maximizing the natural landscape.



THE LOCATION

This parcel of land is nestled along the edge of Bukit Panjang, sandwiched by the private estate enclave of Dairy Farm. Existing developments of the location include schools (including an international school), high-rise condominiums, low-rise landed houses, parks and nature reserves, and an upcoming mixed-use development. A major challenge for this project involved overcoming steep inclination along the plot of land, which put limitations on building new infrastructures.

Visitors of this project are encouraged to enter from the nearest bus stop along Petir Road, and will have access to the facilities via a drop-off point connected to the mall, and the path via Forest TreeTop Walk.

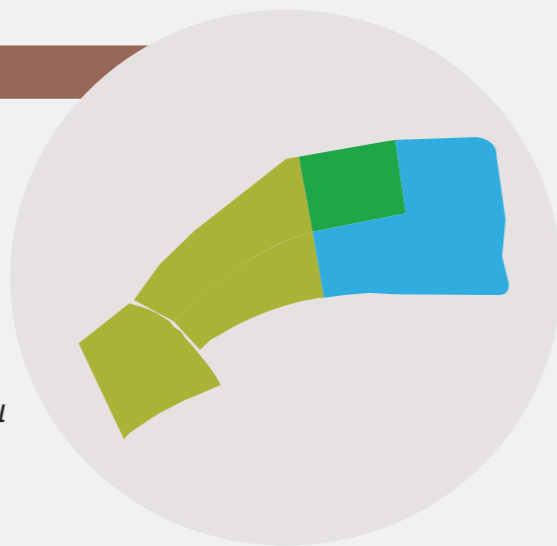
LAND PARCELING

In comparison with current designated land use of residential and educational institutions, we propose to alter the land parceling as indicated on the right.

- Open Space
- Park
- Commercial & Residential

This is in consideration of the exchange value for current residents of Dairy Farm area, economical sustainability of the project, flexibility of the land parcel.

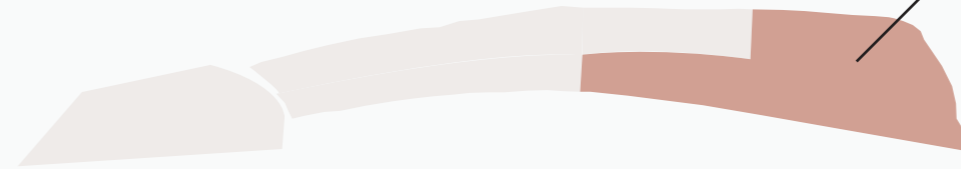
While we wish to develop the area, we also want to maintain the tranquility by reducing potential congestion.



ABOUT THE PROJECT

- Low-rise development with ample of open, breathing spaces that function as event and commercial spaces (such as biweekly farmer's market or seasonal events)
- Seamless walking and cycling experience around the development, encouraging healthy lifestyle while embracing nature.
- Increasing inclusivity of existing facilities while introducing new family-friendly amenities, as our targeted demographics are families and youth.
- Phase 1: To build facilities and residence to attract crowd to the mall and area.
- Phase 2: To increase the facilities available within the project.
- Phase 3: Enhancement of existing features (quietest phase, to minimize disruption to Dairy Farm Folium residents), a second round of publicity to attract more crowd to the area.

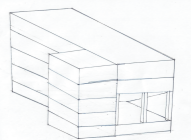
Mixed-Use Development PHASE ONE



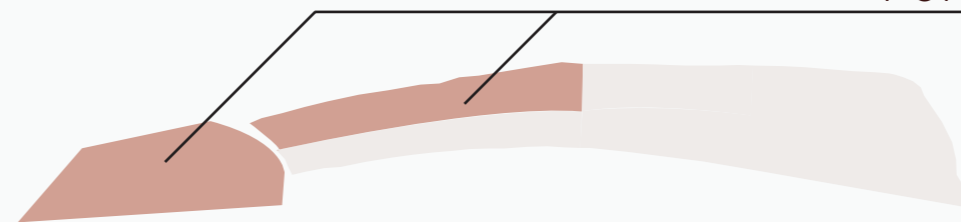
What: Dairy Farm Folium, a mall and residence, seamlessly integrated with nature and its surrounding. This adds value to Dairy Farm, without cluttering the space.

Why: To provide amenities and entertainment without taking away serenity, creating a space to live with and enjoy nature by being mindful of the surrounding in order to not be obtrusive.

How: Green-themed architecture and interior design, with green open spaces within the building. Potential amenities include cinema and bowling alley. Residence form the top two floors of the project with dedicated facilities.



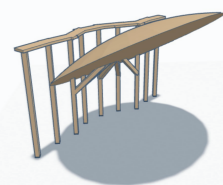
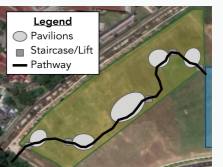
Forest TreeTop Trail & Pavillions PHASE TWO



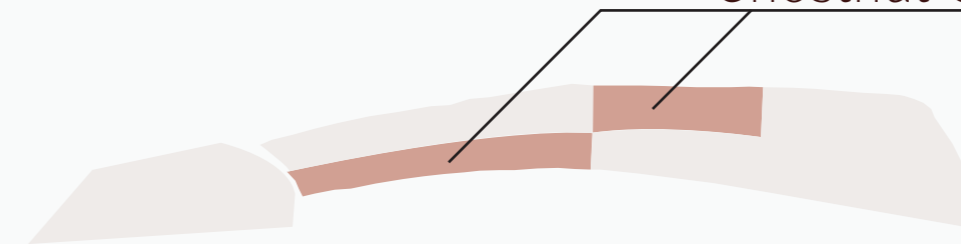
What: Forest TreeTop Walk (above the tree canopy), connected to pavillions and an open space underneath a Link Bridge. The open space also serves as an event space, with cafes and store spaces for independent brands.

Why: Create a more intimate relationship with nature, encourage an active lifestyle, bring the community together through events, exhibitions and other activities. All ages are welcome to enjoy the facilities and events.

How: Forest Treetop walk built in existing wooded area, with measures taken to minimize disruption to the natural environment, partnering with NParks, PA and grassroots organizations to create a lively community space.



Chestnut Close Park & Art Installations PHASE THREE



What: Expansion of existing park (more amenities) and fitting of garden themed art installations at open space.

Why: To increase the attractiveness of current facilities, and to expand the capacity of current park to accommodate increased number of residents in the future. The art installations also function as photo spots to attract visitors, increasing footfall to the mall.

How: To expand the park and make it inclusive to the young and aged, families with children. In order to draw connectivity with Singaporean culture, the project can explore incorporating Vanda Miss Joaquim into the design.

